

Goat Anti-CXCR7 / RDC1 Antibody (C Terminus)
Purified Goat Polyclonal Antibody
Catalog # AF4251a**Specification**

Goat Anti-CXCR7 / RDC1 Antibody (C Terminus) - Product Information

Application	WB, E
Primary Accession	P25106
Other Accession	NP_064707.1
Reactivity	Human
Predicted	Human
Host	Goat
Clonality	Polyclonal
Concentration	0.5
Calculated MW	41493

Goat Anti-CXCR7 / RDC1 Antibody (C Terminus) - Additional Information**Gene ID** 57007**Other Names**

ACKR3; atypical chemokine receptor 3; CMKOR1; CXC-R7; CXCR-7; CXCR7; GPR159; RDC-1; RDC1; C-X-C chemokine receptor type 7; G protein-coupled receptor; G-protein coupled receptor 159; G-protein coupled receptor RDC1 homolog; chemokine (C-X-C motif) recepto

Dilution

WB~~1:1000

E~~N/A

Format

Supplied at 0.5 mg/ml in Tris saline, 0.02% sodium azide, pH7.3 with 0.5% bovine serum albumin. Aliquot and store at -20°C. Minimize freezing and thawing.

Immunogen

Peptide with sequence C-TEYSALEQSTK, from the C Terminus of the protein sequence according to NP_064707.1.

Storage

Maintain refrigerated at 2-8°C for up to 6 months. For long term storage store at -20°C in small aliquots to prevent freeze-thaw cycles.

Precautions

Goat Anti-CXCR7 / RDC1 Antibody (C Terminus) is for research use only and not for use in diagnostic or therapeutic procedures.

Goat Anti-CXCR7 / RDC1 Antibody (C Terminus) - Protein Information

Name ACKR3 ([HGNC:23692](#))**Function**

Atypical chemokine receptor that controls chemokine levels and localization via high-affinity chemokine binding that is uncoupled from classic ligand-driven signal transduction cascades, resulting instead in chemokine sequestration, degradation, or transcytosis. Also known as interceptor (internalizing receptor) or chemokine-scavenging receptor or chemokine decoy receptor. Acts as a receptor for chemokines CXCL11 and CXCL12/SDF1 (PubMed:16107333, PubMed:19255243, PubMed:19380869, PubMed:20161793, PubMed:22300987). Chemokine binding does not activate G-protein-mediated signal transduction but instead induces beta-arrestin recruitment, leading to ligand internalization and activation of MAPK signaling pathway (PubMed:16940167, PubMed:18653785, PubMed:20018651). Required for regulation of CXCR4 protein levels in migrating interneurons, thereby adapting their chemokine responsiveness (PubMed:16940167, PubMed:18653785). In glioma cells, transduces signals via MEK/ERK pathway, mediating resistance to apoptosis. Promotes cell growth and survival (PubMed:16940167, PubMed:20388803). Not involved in cell migration, adhesion or proliferation of normal hematopoietic progenitors but activated by CXCL11 in malignant hematopoietic cells, leading to phosphorylation of ERK1/2 (MAPK3/MAPK1) and enhanced cell adhesion and migration (PubMed:17804806, PubMed:18653785, PubMed:19641136, PubMed:20887389). Plays a regulatory role in CXCR4-mediated activation of cell surface integrins by CXCL12 (PubMed:18653785). Required for heart valve development (PubMed:17804806). Regulates axon guidance in the oculomotor system through the regulation of CXCL12 levels (PubMed:31211835).

Cellular Location

Cell membrane; Multi-pass membrane protein. Early endosome. Recycling endosome. Note=Predominantly localizes to endocytic vesicles, and upon stimulation by the ligand is internalized via clathrin-coated pits in a beta-arrestin-dependent manner. Once internalized, the ligand dissociates from the receptor, and is targeted to degradation while the receptor is recycled back to the cell membrane.

Tissue Location

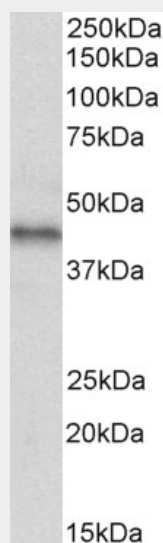
Expressed in monocytes, basophils, B-cells, umbilical vein endothelial cells (HUVEC) and B-lymphoblastoid cells Lower expression detected in CD4+ T-lymphocytes and natural killer cells. In the brain, detected in endothelial cells and capillaries, and in mature neurons of the frontal cortex and hippocampus. Expressed in tubular formation in the kidney. Highly expressed in astroglial tumor endothelial, microglial and glioma cells. Expressed at low levels in normal CD34+ progenitor cells, but at very high levels in several myeloid malignant cell lines. Expressed in breast carcinomas but not in normal breast tissue (at protein level).

Goat Anti-CXCR7 / RDC1 Antibody (C Terminus) - Protocols

Provided below are standard protocols that you may find useful for product applications.

- [Western Blot](#)
- [Blocking Peptides](#)
- [Dot Blot](#)
- [Immunohistochemistry](#)
- [Immunofluorescence](#)
- [Immunoprecipitation](#)
- [Flow Cytometry](#)
- [Cell Culture](#)

Goat Anti-CXCR7 / RDC1 Antibody (C Terminus) - Images



AF4251a (2 µg/ml) staining of Human Breast cancer lysate (35 µg protein in RIPA buffer). Primary incubation was 1 hour. Detected by chemiluminescence.

Goat Anti-CXCR7 / RDC1 Antibody (C Terminus) - References

C-X-C chemokine receptor 7: a functionally associated molecular marker for bladder cancer. Yates TJ, Knapp J, Gosalbez M, Lokeshwar SD, Gomez CS, Benitez A, Ekwenna OO, Young EE, Manoharan M, Lokeshwar VB. Cancer 2013 Jan 119 (1): 61-71.